



REF: GVAM378

Family apartment for rent in the Galvany area

Barcelona, Eixample

Family apartment for rent in the Galvany area. Well connected next to Catalan railways, buses and very close to schools, shops and restaurants. High floor of 150m2 useful in which its large living room of about 50m2 stands out with access to a balcony of approximately 7m2. Semi-equipped independent kitchen and water area. The sleeping area consists of 3 en-suite bedrooms with a bathroom with a bathtub and 2 with a shower. All of them with built-in wardrobes. We have a fourth multipurpose room and a bathroom with a bathtub. Parquet floors, climalit aluminum carpentry, split air conditioning in the living room and in one of the bedrooms. Gas heating. The farm has an elevator and a concierge service.

Data sheet

Distribution

- Surface 177m2
- 4 rooms
- 4 baths
- Terrace 7m2
- Good condition

Characteristics

- Air conditioning
- Heating
- All exterior
- Energy rating: E

Additional Data

- Lift

Global terms

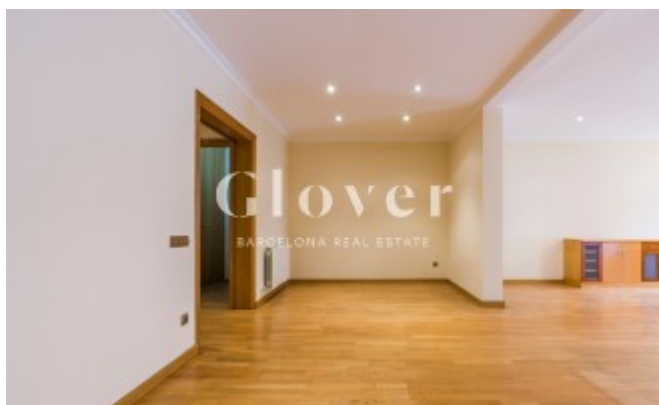
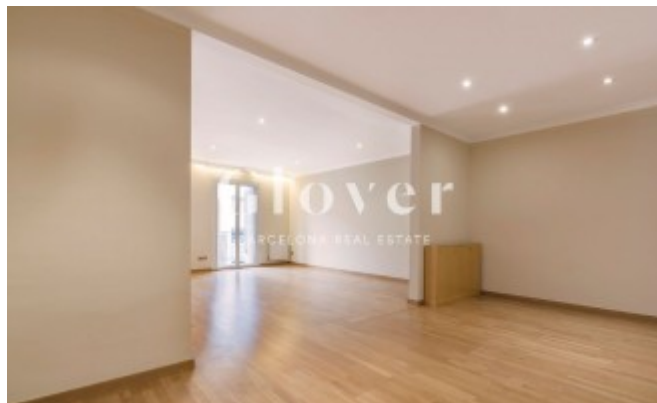
The information on this website has been provided by third parties, as merely informative and is assumed correct. Glover Barcelona does not guarantee its veracity. The offer may be subject to inaccuracies, errors, unintentional omissions, price changes and / or withdrawal from the market without prior notice. The taxes corresponding to the rent, in particular the ITP are also at the expense of the lessee. Other particular conditions, such as duration, bond, guarantees, consumptions / supplies or community expenses when they exist, will be agreed and specified in each specific case.

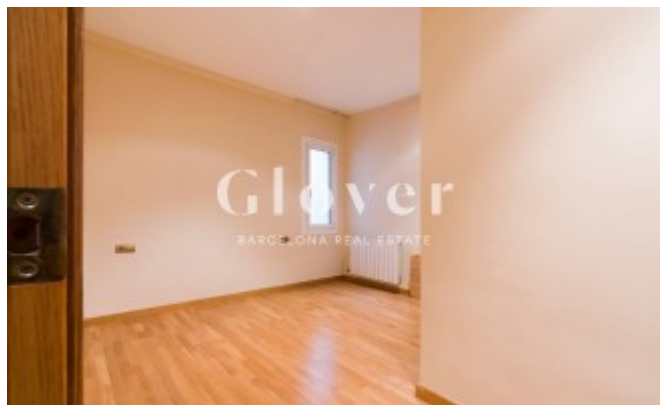
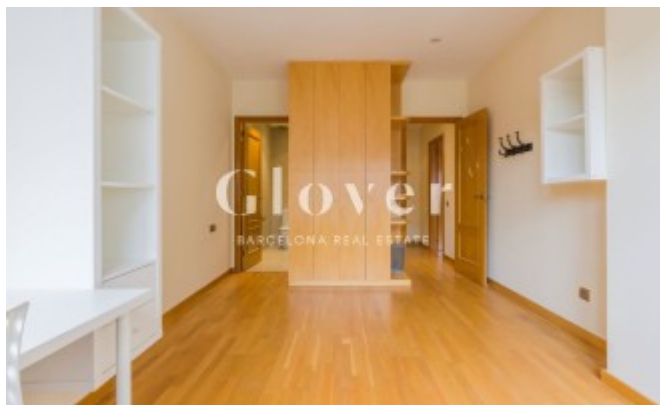
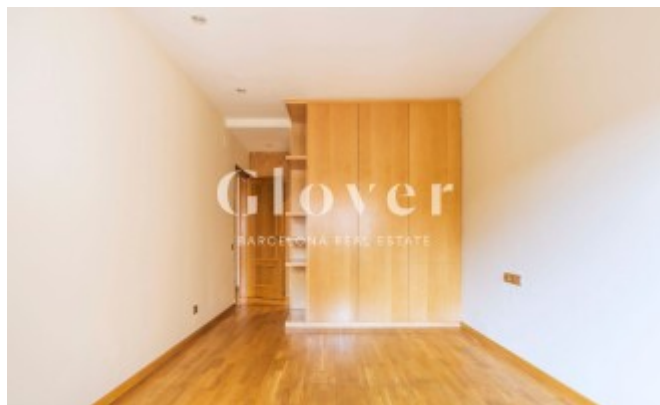
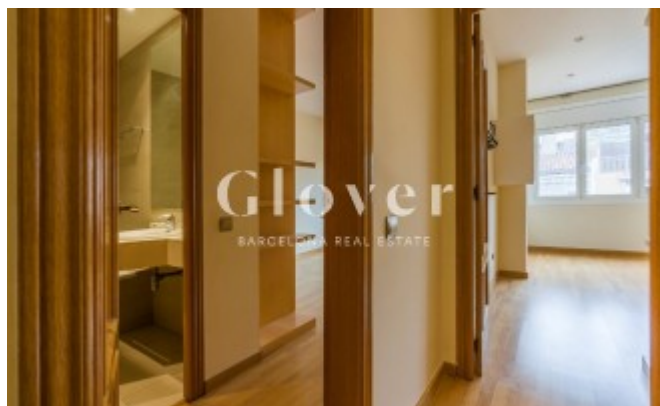
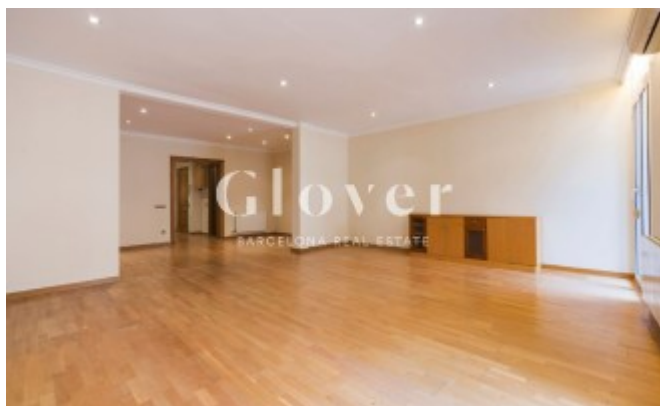
Map:

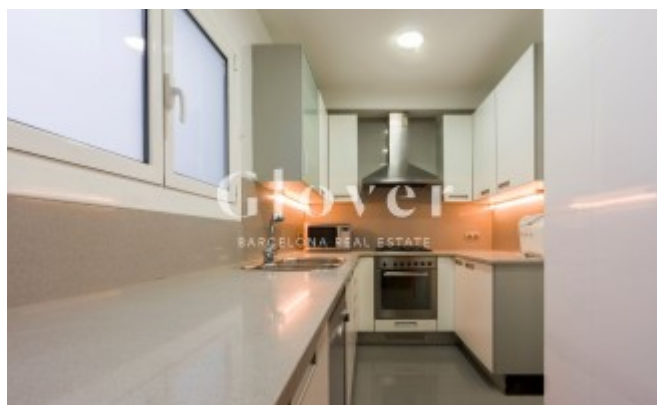
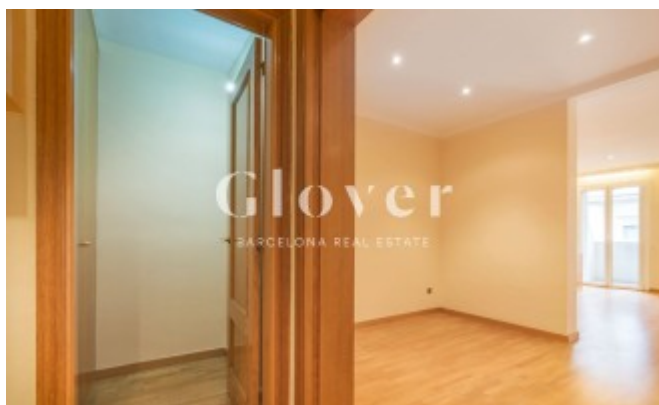
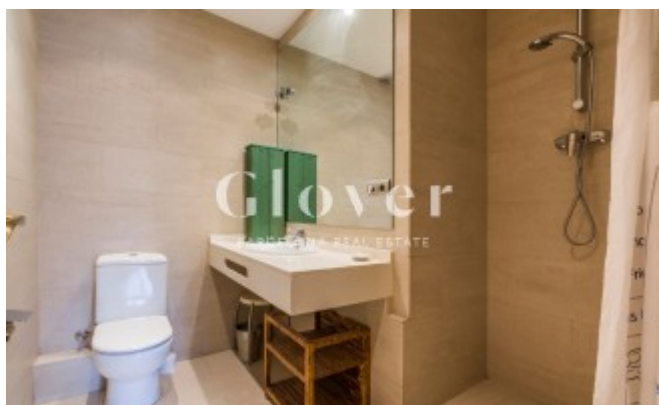
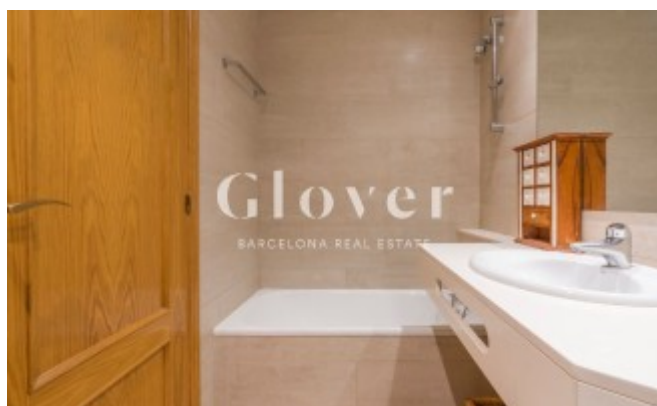
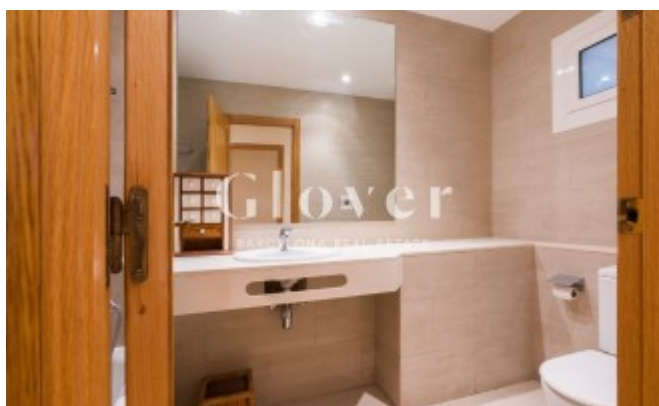
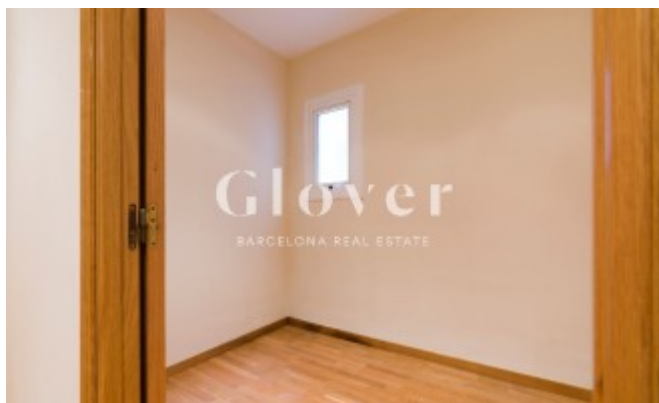
<https://www.google.com/maps/@41.3995,2.14251,16z?hl=en>

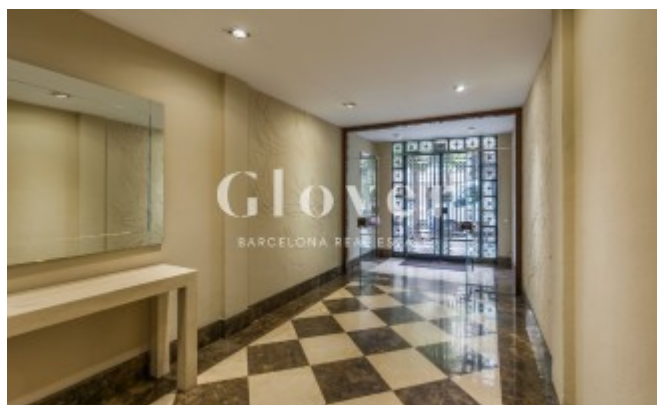
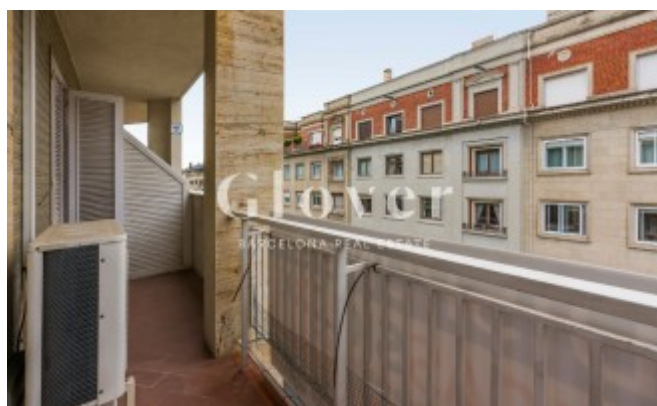
Link:

<https://www.gloverbarcelona.com/en/properties/barcelona-eixample-family-apartment-rent-galvany-area-568>









ferior
€/m²

Índex
13.3 €/m²

Àrea sup
17.83 €